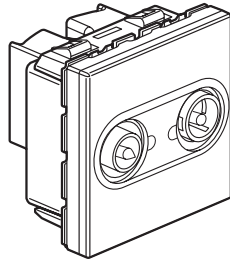
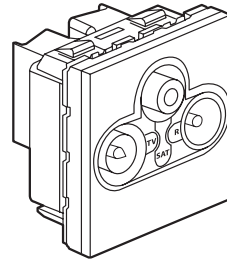


TV-R/TV-R-SAT socket outlets Mosaic™

Cat. No(s) : 787 83/84/86



787 83






787 86

1. GENERAL CHARACTERISTICS

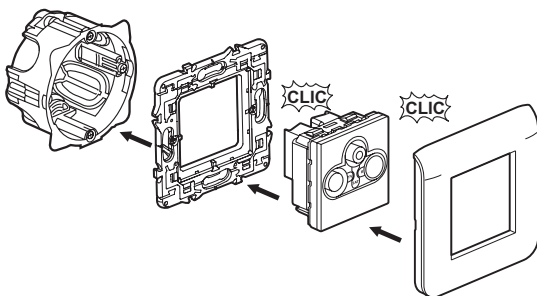
TV-R and TV-R-SAT television sockets for individual or collective installation with reception via :

- radio relay antenna
- parabolic antenna with individual demodulator

| | Cat. No. | Designation | No. of modules | Weight (g) |
|---|----------|---|----------------|------------|
|  | 787 83 | TV-R socket (male/female 9.52 ECH01 type) | 2 | 67 |
|  | 787 84 | TV-R socket (male/female 9.52 ECH03 type) | 2 | 67 |
|  | 787 86 | TV-R-SAT socket | 2 | 67 |

2. MOUNTING

Flush-mounting mechanisms using adapter Cat. No. 802 99 (2 modules). The mechanisms can be mounted on thin walls using adapter Cat. No. 802 91 (2 modules). The mechanisms can be flush-mounted or surface-mounted.



3. TECHNICAL CHARACTERISTICS

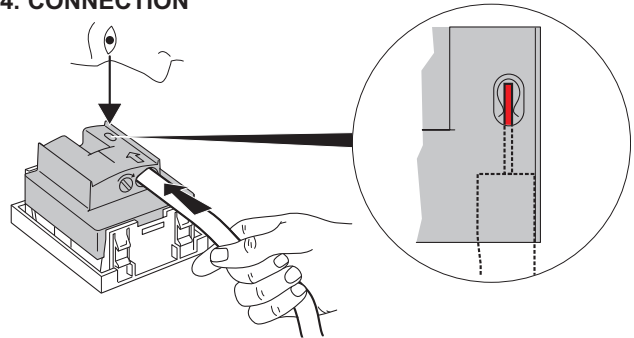
- TV connector, male Ø 9.52 mm conform to IEC 169-2
- FM connector, female Ø 9.52 mm conform to IEC 169-2
- "F" connector, female, to be screwed Ø 9.4 mm
- Frequency bands
TV 5-68 120-862 Mhz
FM 87.5-108 Mhz
SAT 950-2150 Mhz
- Characteristic impedance 75 Ω
- Return voice on TV connector
- Shielding attenuation
UHF > 65 dB
VHF > 75 dB
SAT > 55 dB
- Max. incoming cable Ø on input - 7 mm

3. TECHNICAL CHARACTERISTICS (cont'd)

3.1 Material characteristics

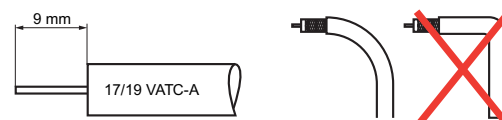
Cover plate in ABS IK03

4. CONNECTION



5. CABLING PRECAUTIONS

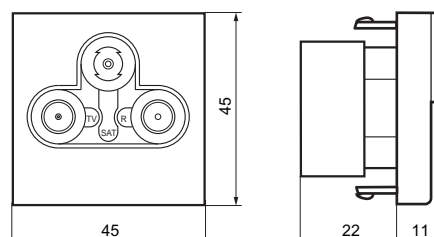
Stripping length



Make sure the coaxial cable has the largest possible bend radius to prevent impedance breakage and a resulting deterioration in performance due to deformation of this coaxial cable.

A signal amplifier must be used with passage and terminal sockets to compensate for attenuations generated by this technique.





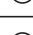






6. OVERALL DIMENSIONS



TV-R/TV-R-SAT socket outlets Mosaic™

Cat. No(s) : 787 83/84/86

7. PERFORMANCES

| | Coax | Attenuation 862 MHz (insertion) |  | Control | Band 1 | FM | VHF | UHF | BIS (sat.) |
|--------|--|---|---|---------|---------|------------|-----------|-----------|------------|
| | ∅ 9.5 mm Z = 75 | Attenuation | 500 mA | Control | Channel | Channel | Channel | Channel | Channel |
| | |  | — | DISEqC® | 47 - 68 | 87.5 - 108 | 120 - 470 | 470 - 862 | 950 - 2150 |
| | | dB | mA | Khz / V | Mhz | Mhz | Mhz | Mhz | Mhz |
| 787 86 | <ul style="list-style-type: none">  TV  R  SAT | $i \leq 1.5$ dB | yes | DISEqC® | 1.5 dB | 1.5 dB | 1.5 dB | | 2 dB |
| 787 83 | <ul style="list-style-type: none">  TV  R  SAT | | | | | | | | |
| 787 84 | <ul style="list-style-type: none">  TV  R  SAT | | | | | | | | |